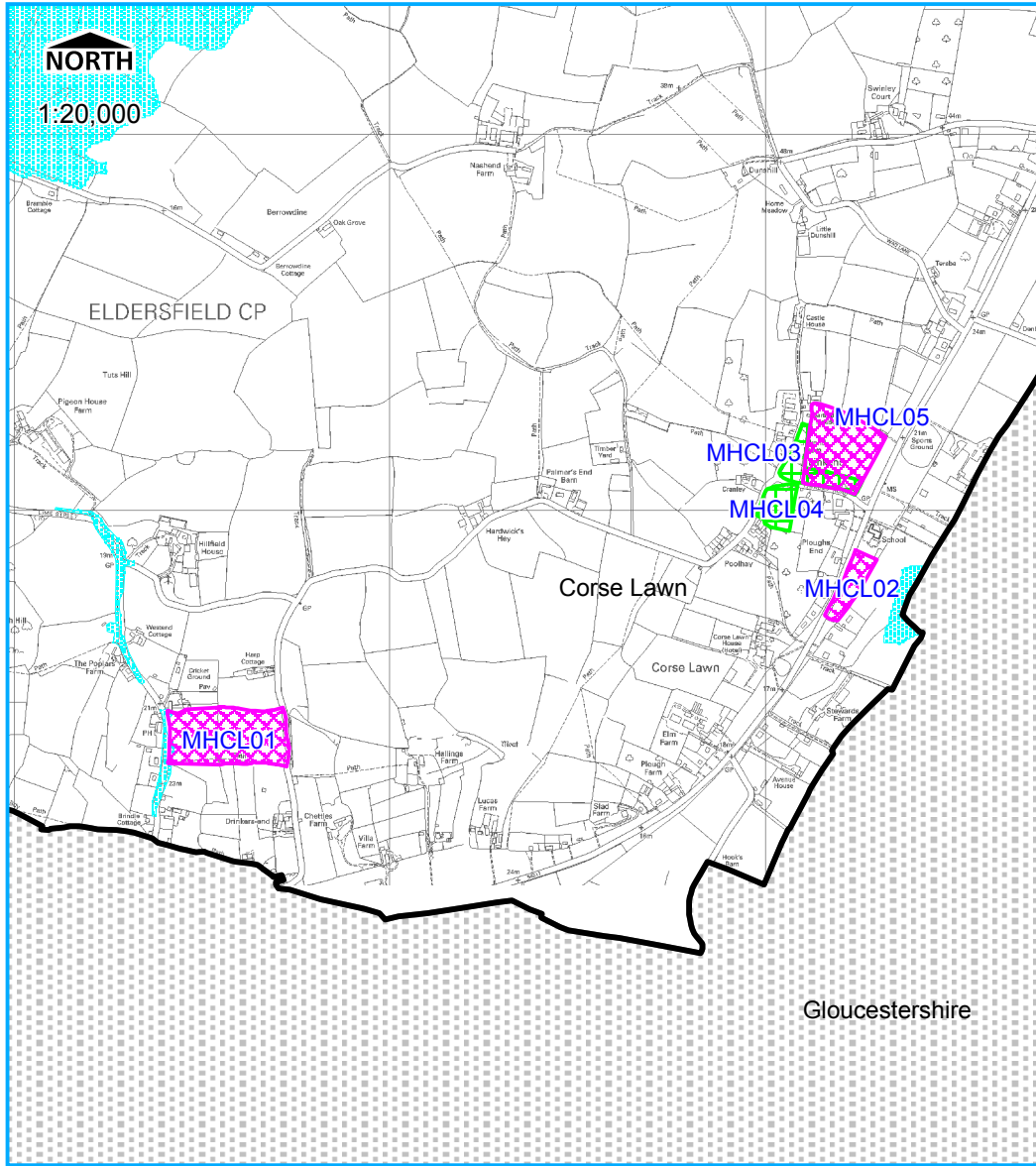
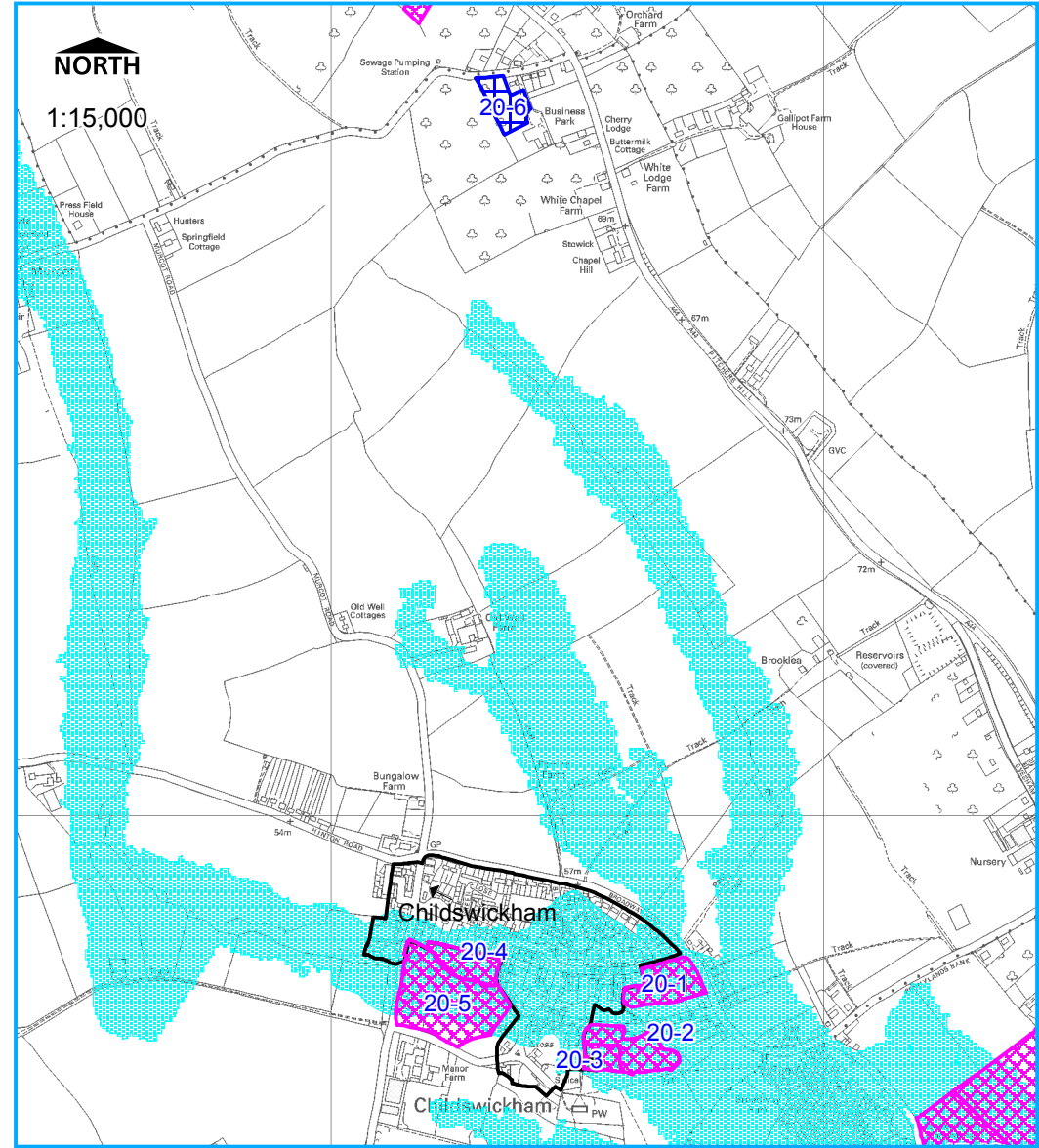


STRATEGIC HOUSING LAND AVAILABILITY ASSESSMENT: Category 3 Villages

Corse Lawn






Childswickham



[www.swjcs.org](http://www.swjcs.org)  
The South Worcestershire Joint Core Strategy

Category 3

	Sites within Malvern Hills DC		Sites ruled out		Settlement boundary
	Sites within Wychavon DC		SWJCS boundary		Flood Zone

Reproduced from the Ordnance Survey mapping with the permission of the Controller of Her Majesty's Stationery Office. © Crown Copyright. Unauthorised reproduction infringes Crown Copyright and may lead to prosecution or civil proceedings. WDC Licence No. 100024324 (2010)